



Trinity College Dublin

Coláiste na Tríonóide, Baile Átha Cliath

The University of Dublin

Postgraduate Diploma in Social Policy & Practice



The Open Evening will begin shortly



Welcome

- At today's webinar
 - Trinity College Dublin
 - The Programme & Learning Online
 - Is this Programme for You?
 - Resources and Support
 - Admissions, applications & fees
 - MSc in Social Policy & Practice
 - Current students' experiences
- Your questions
 - At any time, use the chat box or microphone
 - Technical problems - use the chat box



Dr Louise Caffrey
Programme Director



Erin Paullin
Global Officer



Trinity College Dublin

Trinity College Dublin was established in 1592

It is ranked the 1st university in Ireland and 101st in the World (2021)

It ranks 92nd in the world for employability (2020)

It is the 17th most international university in the world (2020)

<https://www.tcd.ie/study/international/why-trinity/index.php>



The Programme

- Develop your understanding of social policy options open to governments.
- How the implementation of social policy can impact on practice.
- Apply social science theories and social research evidence to the critical analysis and evaluation of social policies and their implementation.

Contemporary Social Policy
Debates and Analysis

The Family and Society

Housing Policy

Principles of Social Policy

Leading Human Service
Organisations

Human Rights & Disability



The Programme Staff

- Actively engaged in research:
 - relevant to the development, implementation and evaluation of social policy
 - national and international research partnerships and collaboration
 - evidence-based teaching
- Experienced teaching diverse groups of students



Dr. Stephanie Holt >
Head of School & Course Director,
PG Dip in Child Protection & Welfare
Tel: +353 1 896 3908
Email: sholt@tcd.ie



Dr. Louise Caffrey >
Assistant Professor, Social Policy &
Course Coordinator, PG Dip in Social
Policy & Practice
Tel: +353 1 896 3708
Email: caffrelo@tcd.ie



Dr. Edurne Garcia Iriarte >
Assistant Professor, Intellectual
Disability & Course Director, PG Dip
in Social Policy & Practice
Tel: +353 1 896 2200
Email: iriarte@tcd.ie



Dr. Julie Byrne >
Assistant Professor in Online
Education & Development (Part-
Time)
Tel: +353 1 896 4648
Email: byrnej18@tcd.ie



Ms Emma McConkey >
Senior Executive Officer, Master in
Social Work, MSc & PG Diploma in
Child Protection & Welfare, MSc &
PG Diploma in Social Policy &
Practice. Tel:+353 1 896 4579 Email:
mconkee@tcd.ie



Dr. Catherine Conlon >
Assistant Professor, Social Policy &
Course Director, BA in Sociology &
Social Policy
Tel: +353 1 896 1312
Email: conlonc@tcd.ie

Some questions you will ponder...

- How is social policy in contemporary societies responding to the global challenges of the 21st century such as poverty?
- How are disadvantaged groups featured in social policy?
- When did society start classifying people as “normal”? What effect does the concept of normalcy have in current social policies?
- How effective is policy in making cities accessible for people with disabilities?
- What explains the gender pay gap?
- Is Universal Basic Income the solution to the changing context of work?



Learning Online

Weekly materials

- Series of folders
 - Presentations
 - Audio
 - Video
 - Readings

Weekly engagement

- Series of exercises
 - Forum
 - Blog
 - Learning journal
 - Tutorial

SS762A-A-Y-201415 (MANAGING CHANGE IN SOCIAL SYSTEMS)

Managing Change in Social Systems

Module Sessions

- Session 1: Introduction to Change Management and Social Systems
- Session 2: Managing Planned Change
- Session 3: Emergent Change
- Session 4: Individual Responses to Change
- Session 5: Conflict Management
- Session 6: Understanding Social Systems
- Session 7: The Structure and Management of Organisations
- Session 8: Management and Adaptive Capacity
- Session 9: The Policy-making Process
- Session 10: Evidence-based Policy

Module Tools

- Introduction
- Prepare
- Study
- Apply
- Reflect
- Recall

The Tutorial

The screenshot shows a Zoom meeting interface. The main content is a presentation slide titled "Apply" with the subtitle "Managing Individual Responses to Change". The slide features a graph titled "Performance and self-esteem" showing two metrics over five stages of change:

- Stage 1: Denial (Red)
- Stage 2: Defence (Purple)
- Stage 3: Discarding (Green)
- Stage 4: Adaptation (Orange)
- Stage 5: Internalisation (Blue)

The graph plots "High" and "Low" on the y-axis and "Time" on the x-axis. A solid blue line represents "Self-esteem" and a dotted blue line represents "Performance". Both metrics start at a high level, drop significantly during the Denial and Defence stages, reach their lowest point in the Discarding stage, and then gradually recover through the Adaptation and Internalisation stages, ending at a high level.

Zoom interface details include a toolbar at the top with icons for chat, share, mute, video, and screen share. The right sidebar shows "15 Attendees" and "Moderators (2)", with "DR. JULIE BYRNE" listed as a moderator. A small video thumbnail of a participant is visible at the bottom right.

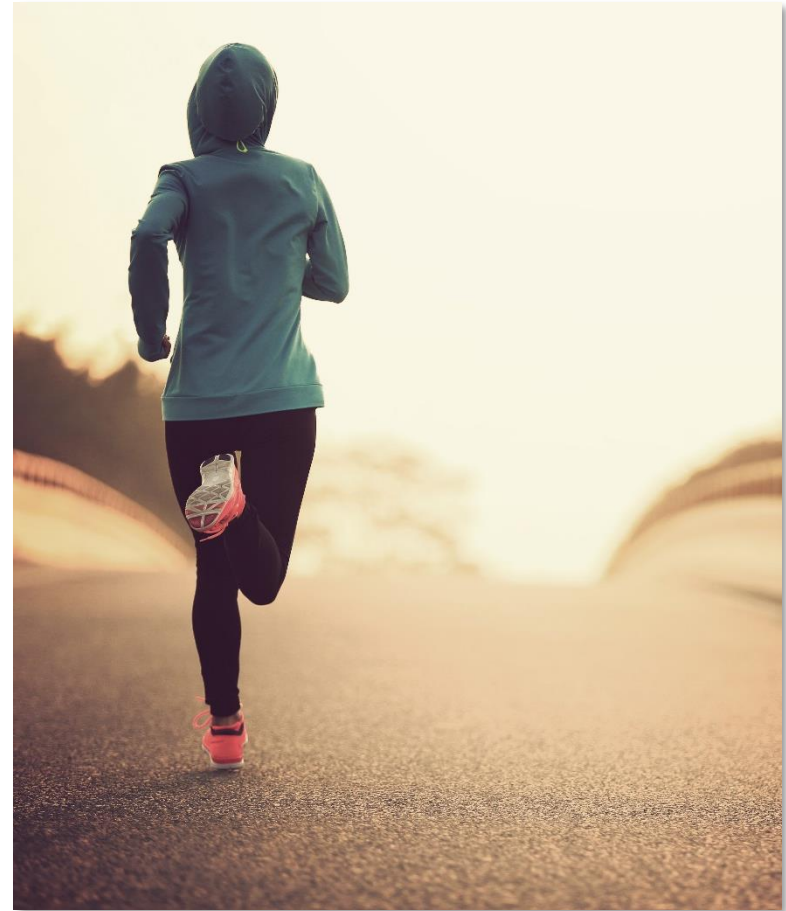
Assessment

- No examinations
- Essays
- Projects
- Portfolios
- Case Studies
- Preparation supports for academic writing
- Feedback on each assessment



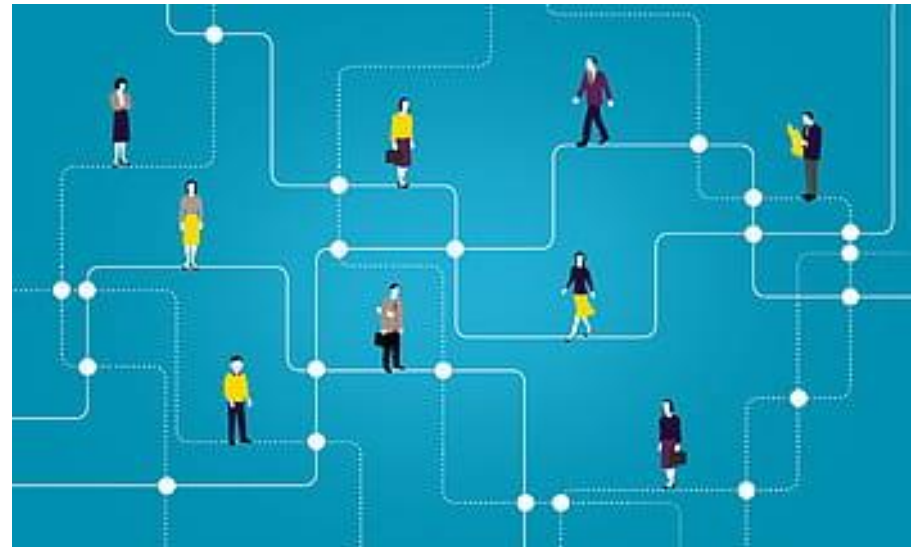
Commitment

- Time
 - 60 ECTS Sept-May
 - C. 10-15 hours per week
 - 2 hour tutorial attendance/week
 - Continuous assessment
- Skill Development
 - Research
 - Reading
 - Discussion
 - Analysis
 - Online learning readiness



Career Paths

- Career Change
 - Social Work
 - Social Research
 - Services Provision
 - Policy Development
 - Advocacy
- Career Development
 - Services Management
 - Corporate Social Responsibility



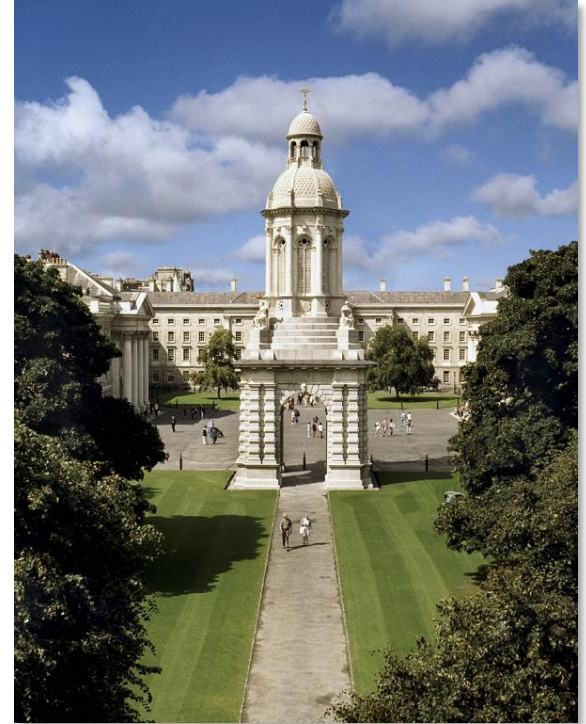
Academic Progression Routes

- MSc. in Social Policy and Practice
- Master in Social Work
- Master in Applied Social Research



Resources and Support

- Students have physical and remote access to TCD resources and supports e.g.
 - Library
 - Student Learning and Development
 - Sports Centre
- All students receive a TCD student card for on campus access



Admissions and Applications

- See website for FAQs and link to electronic application process
 - ✓ Complete the application form online
 - ✓ Two references – 1 academic & 1 professional
 - ✓ Official Transcripts
 - ✓ Curriculum Vitae



Level 8
2.2 min



Closing Date:
31st July
2022

- All documentation is required by July 31st before you can be made a firm offer

- Start your application, save and add documentation

Non-EU Admissions



- Must hold a level 8 qualification (typically a 4-year Bachelor's degree) completed to a 2:2 or higher (2.8 cumulative GPA on a 4.0 scale).
- Applicants whose first language is not English and who have not been educated through the medium of English must present one of the following qualifications in the English language.
 - ✓ IELTS: Grade 6.5 overall, TOEFL: 88 internet-based, 570 paper-based, 230 computer-based, Duolingo: 110/160
- Offer holders automatically considered for school's international PGT scholarship (15 April 2022 deadline).

Fees and Scholarship

Fees 2022/23

Postgraduate Diploma in Social Policy and Practice

- EU students 6,502 €
- Non-EU students 12,408 €

M.Sc Social Policy and Practice

- EU students 7,682 €
- Non-EU students 15,396 €

Scholarship (non-EU applicants)

- €4,000
- Applicants must meet programme entry requirements and hold an offer to join the programme by 15 April 2022
- Applications are assessed based on academic achievement and potential to contribute to the overall TCD and SWSP community.

<https://www.tcd.ie/swsp/postgraduate/Social-Policy-Practice/fees.php>

Direct Entry From Postgraduate Diploma into MSc in Social Policy and Practice

Students who receive an average of 60% or more in the Postgraduate Diploma in Social Policy and Practice

Invited to apply for Masters in Social Policy and Practice.

Application is by means of a research proposal.

MSc in Social Policy and Practice

- Postgraduate Course for MSc qualification (level 9)
- 1 Year: MSc Dissertation 17-20,000 words (30 ECTS)
- Delivered online (fully)
- 1 year – September- May
- Apply your understanding of social studies and social policy to a societal issue or specific social service
- Online Research Methodology module delivered online across full academic year
- Individually assigned academic supervisor for regular online one-to-one contact giving direct guidance on your independent research for your dissertation

Current students' experiences

For further information



Dr. Louise Caffrey
Louise.caffrey@tcd.ie
Director, PGDip in Social Policy and Practice



Erin Paullin
Erin.Paullin@tcd.ie
Global Officer, School of Social Work and Social Policy



Catherine Conlon
conlonce@tcd.ie
Director, MSc in Social Policy and Practice



Emma McConkey
mconkee@tcd.ie
Course administrator, PGDip/MSc in Social Policy and Practice

<https://www.tcd.ie/swsp/postgraduate/Social-Policy-Practice/>



Trinity College Dublin

Coláiste na Tríonóide, Baile Átha Cliath

The University of Dublin

Any Questions?

